

EPCC: UK National Supercomputing Centre

EPCC has been central to supercomputing in the UK for over 30 years, with our activities broadening in the last decade to include data science and AI.

Now designated a UK National Supercomputing Centre, we remain firmly committed to our founding principle to accelerate the effective exploitation of novel computing throughout industry, academia and commerce.



National recognition

In 2025 EPCC was designated the UK's first National Supercomputing Centre by the UK Government, placing us at the heart of the national strategy to expand supercomputing and AI capabilities and leadership.

Next National Supercomputer

EPCC will be home to the UK's Next National Supercomputer. This £750 million Government investment will provide world-leading computational power for research and industry, supporting breakthroughs in areas such as medicine, climate science, and national security.

Advanced computing resources

Over the past 30 years EPCC has operated all but one of the UK's National HPC Services. We also operate HPC systems for the DiRAC consortium, and our new Cirrus system will be expanded as part of a £19.5m UKRI National Compute Resources investment.

Research and innovation

EPCC is widely recognised for its world-leading research activities in the areas of high performance computing, computational systems, applications, and data science. We work closely with universities, research institutes, and industry to enable and accelerate transformative research.

Growing with industry

EPCC offers consultancy, bespoke software and data solutions, and collaborative R&D. We connect industry to our cutting-edge computing resources and expertise, accelerating product development, data analysis, and commercialisation of research.

Responsible, strategic computing

EPCC invests in people and responsive resources to build national and international capability.

Expanding UK capability

Postgraduate education

EPCC delivers specialised MSc programmes in high-performance computing, data science, and AI, training the next generation of experts with industry-relevant skills.

Computational Abilities Knowledge Exchange NetworkPlus (CAKE)

A £1.6m UKRI Digital Research Infrastructure (DRI) initiative led by EPCC, **CAKE** focuses on knowledge exchange and collaboration across the UK's digital research infrastructure.

UKRI Digital Research Technical Professional (dRTP) Skills NetworkPlus Programme

EPCC delivers several activities through the dRTP programme to address digital skills gaps. **CHARTED** aims to improve the training and education ecosystem for HPC and research software engineering. **DRIFT** is developing and delivering training for research facilitators and research teams.

Edinburgh International Data Facility (EIDF)

This world-class private research cloud infrastructure facilitates data science research, R&D needs, and innovation. Designed and operated by EPCC, it continues to evolve to meet the needs our users, who range from the public sector to small businesses and multi-nationals.

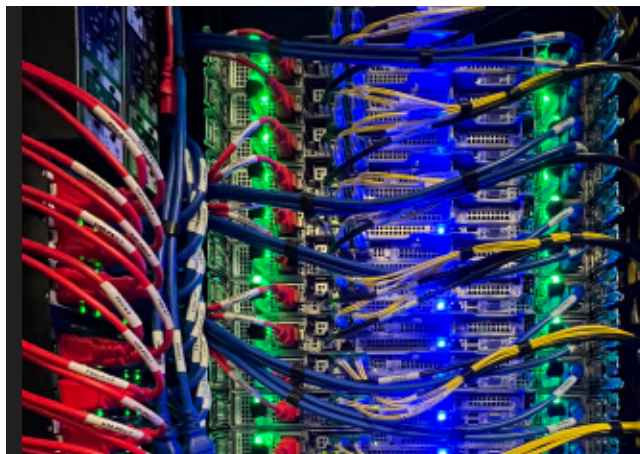
International Capability

International partnerships

We build large-scale, multi-partner research consortia and form strong links between academia, industry, and Government. For example the VECTA Prosperity Partnership with Rolls-Royce to create and run the world's first complete gas turbine simulation. Underpinning our role as a key international hub for supercomputing and AI innovation is our investment in long-standing relationships with global supercomputing institutions, HPC vendors and initiatives.

UK AI Factory Antenna

EPCC is strengthening the UK's AI ecosystem through the UK AI Factory Antenna (UKAIFA), a €10m EU-UK initiative launched in 2025. Progressed under the EuroHPC JU, UKAIFA is helping UK organisations adopt AI by building skills and boosting productivity and economic growth.



Building communities

Networking

EPCC has played a pivotal role in the founding and ongoing success of **Women in HPC**, **Software Sustainability Institute** and the **Society of Research Software Engineering**.

Public outreach

Through events, workshops, and school engagement, EPCC raises awareness of supercomputing and digital technologies, inspiring wider participation and improving public understanding of computational science.

Sustainability

EPCC is a leader in sustainable computing. Its Advanced Computing Facility—one of Europe's largest research data centres—runs on 100% REGO-certified renewable electricity, uses free cooling where possible, provides open-source training on reducing HPC emissions, and actively enhances on-site biodiversity, providing repeatable approaches for the wider HPC community.

To learn more, visit:

<https://www.epcc.ed.ac.uk>

